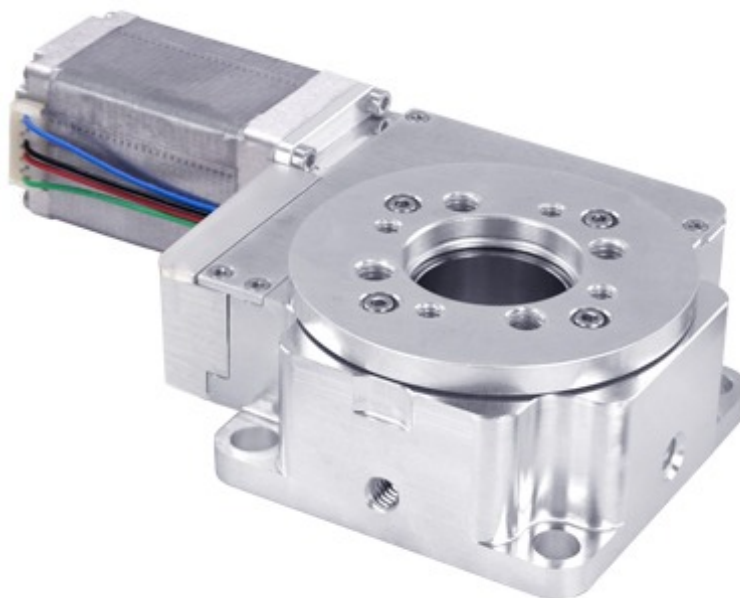


## RSW60A-V1T4 Datasheet



- Vacuum compatible to 10<sup>-3</sup> Torr
- Speed up to 100 °/s and torque up to 100 N-cm
- 20 kg load capacity
- Worm gear driven for continuous rotation
- Only 7 feedthrough wires required to control these units
- Designed for use with an X-MCC Series stepper motor controller or any 2-phase stepper motor controller

## RSW-V1 Series Overview

For more information about the basics of a vacuum system and considerations to keep in mind when gathering requirements for your application, read our technical article, "Motion Device Design Considerations for Vacuum Applications".

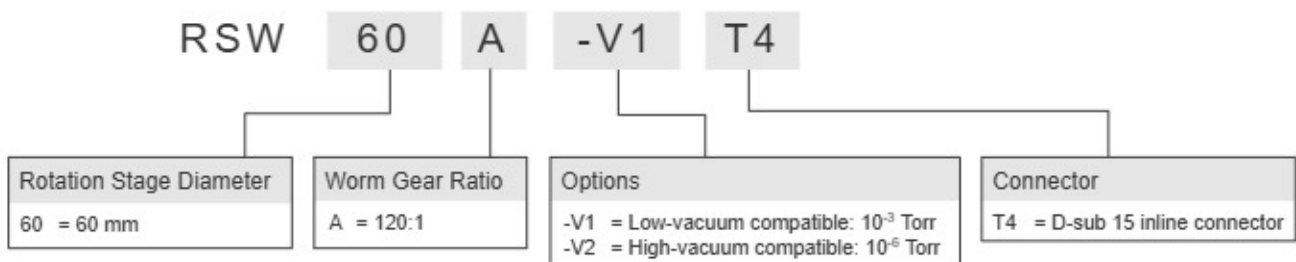
Zaber's RSW-V1 Series devices are low-vacuum compatible, computer-controlled, motorized rotary stages with built-in controllers.

The RSW-V1 is designed with vacuum compatible materials to minimize outgassing and allow for faster pump down times. Like all of Zaber's products, the RSW-V1 Series is designed to be very easy to set up and operate.

These stages are wired with a male D-sub 15 connector for plug-and-play use with our X-MCC Series stepper motor controllers. Simply cut the connector off for flying leads in vacuum and match the wire connections outside of the vacuum for an easy connection. Our handy kits include free software, and all of the accessories that you will need to get the stage running right out of the box.

For more information visit: <https://www.zaber.com/products/vacuum-compatible-stages/RSW-V1>

## RSW-V1 Series Part Numbering & Options



## RSW60A-V1T4 Drawings

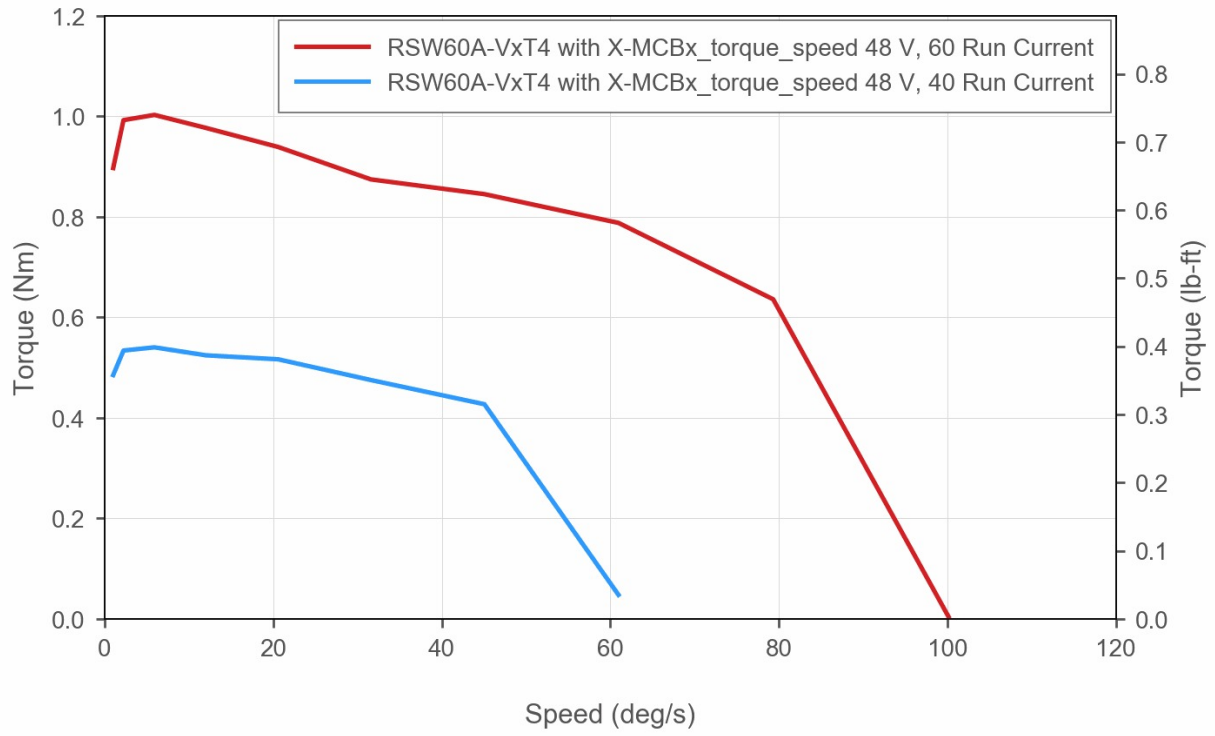
- [RSW-V.png \(Drawing for the RSW-V\)](#)

## RSW60A-V1T4 Specifications

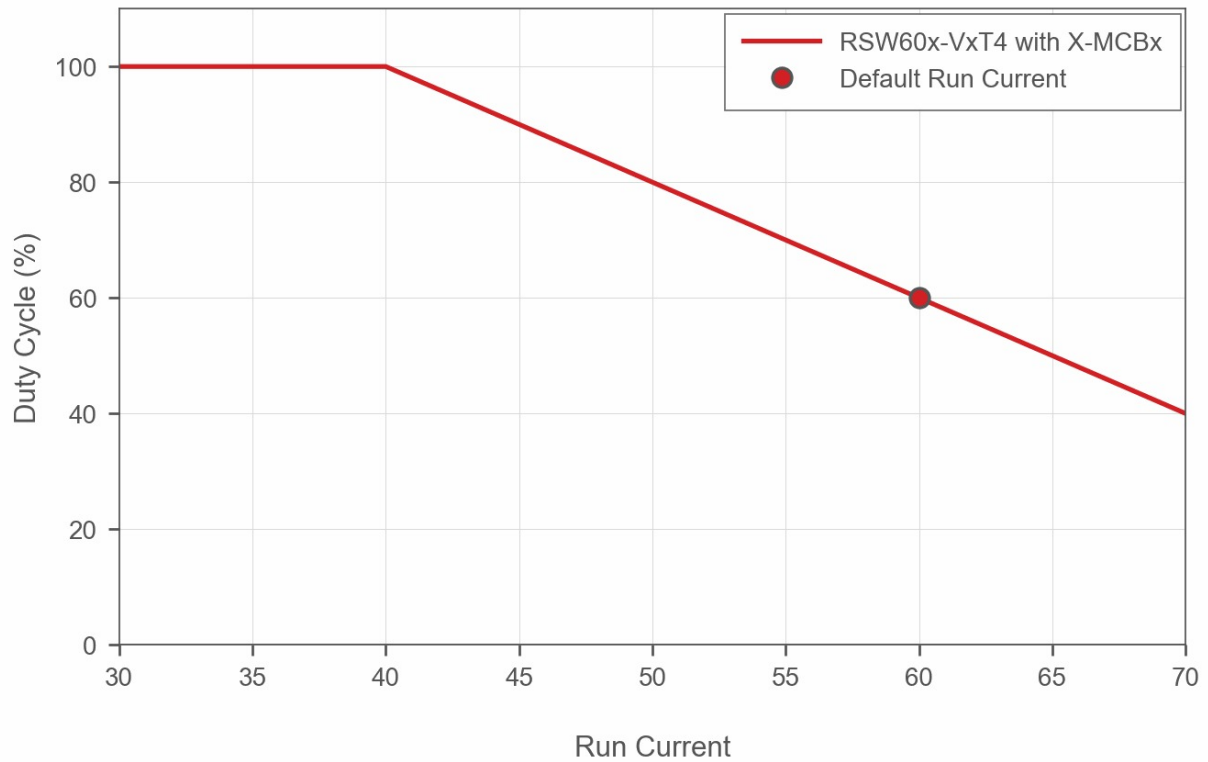
<b>Microstep Size (Default Resolution)</b>	<b>0.000234375° (4.091 μrad)</b>
Built-in Controller	No
Recommended Controller	MCC (48 V) Recommended
AutoDetect	No
Range	360°
Accuracy (unidirectional)	0.14° (2.443000 mrad)
Repeatability	< 0.02° (< 0.349 mrad)
Backlash	< 0.04° (< 0.698 mrad)
Maximum Speed	100°/s (17 rpm)
Minimum Speed	0.000143°/s (2.496 μrad/s)
Speed Resolution	0.000143°/s (2.496 μrad/s)
Encoder Type	No
Maximum Torque	100 N-cm (141.6 oz-in)
Maximum Centered Load	200 N (44.9 lb)
Maximum Moment (Transverse)	410 N-cm (580.6 oz-in)
Stage Top Dimension	60 mm (2.362")
Angular Motion Per Motor Rev	3°
Motor Steps Per Rev	200
Motor Type	Stepper (2 phase)
Motor Rated Current	1300 mA/phase
Inductance	1 mH/phase
Motor Connection	Teflon flying leads with D-sub15 connector
Default Resolution	1/64 of a step
Mechanical Drive System	Precision Worm Gear
Limit or Home Sensing	Magnetic home sensor
Manual Control	No
Operating Temperature Range	0-50 °C
CE Compliant	Yes
Vacuum Compatible	Low vacuum (10 <sup>-3</sup> Torr)
Weight	0.62 kg (1.367 lb)

# RSW-V1 Series Charts

## Torque Speed Performance



## Recommended Duty Cycle



## Contact

Email: [contact@zaber.com](mailto:contact@zaber.com)

Phone (toll free Canada/USA): 1-888-276-8033

Phone (direct): 1-604-569-3780

Fax: 1-604-648-8033

Zaber Technologies Inc.

#2 - 605 West Kent Ave. N.

Vancouver, British Columbia

Canada, V6P 6T7

<https://www.zaber.com>